

C-3561 Cutting Saw

JAPAN Professional Power tools



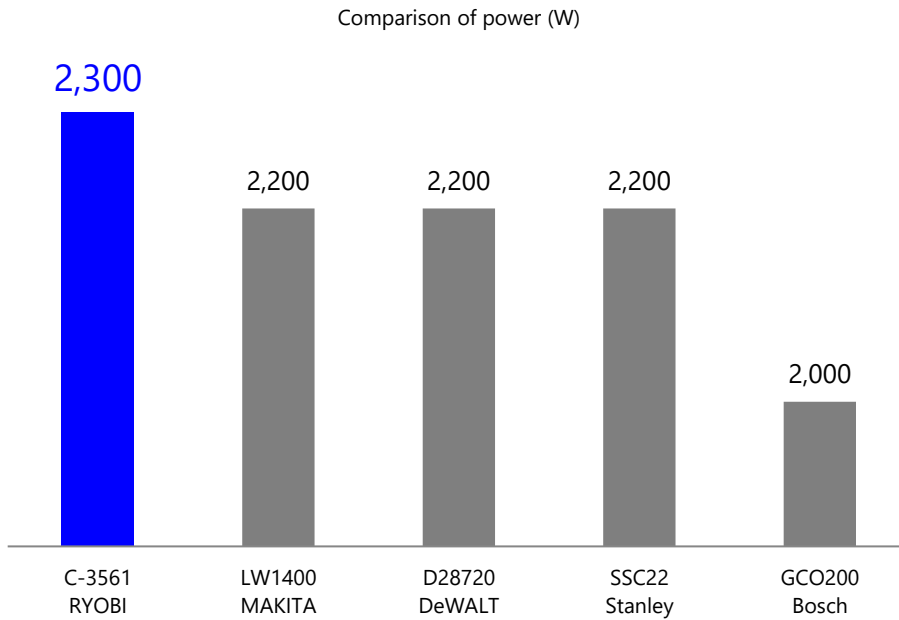
Application

Cutting of steel pipe and lightweight metals.



Advantages

Powerful **2,300w** motor which is suitable for heavy work.
Many professional customers choose this model because of powerful motor.



Low mechanical noise

Low vibration thanks to 4 rubber feet at the base.

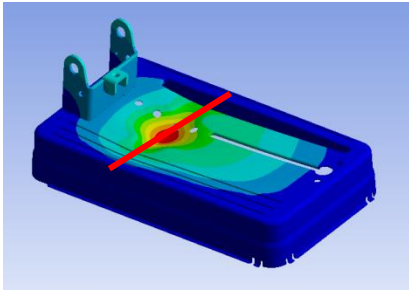


Rubber feet
reduce vibration
while cutting.

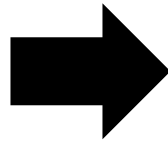
Advantages

Accurate cutting thanks to robust body

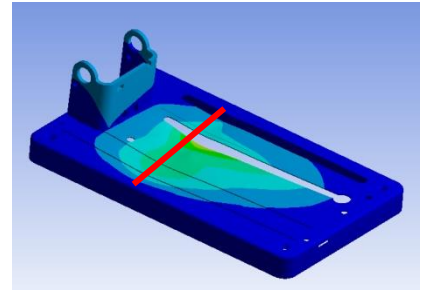
The rigidity of base is better than conventional model. Computer simulation enables us to design the body which is lighter, but more robust body.



Deformation of C-3560
(Previous model)



40%UP



Deformation of C-3561
(New model)

Specification



Input	2,300 W
Blade size	355 mm
Blade Bore	25.4 mm
Cutting Capacity	
- Round pipe	120 mm
- Rectangle pipe	75 x 211 mm
- Angle steel	130 x 130 mm
Rotation speed	3,600min ⁻¹
Overall dimensions	615×335×430 mm
Weight	16.0 kg

Spare Parts List

No.	Parts code	Description
1	9300500	HEX. NUT M5
2	3080338	MOTOR HANDLE SET
3	3560052	CLAMP
4	9120412	TRUSS HEAD SCREW M4X12
5	3550094	TRIGGER SWITCH JIABEN
6	9120410	TRUSS HEAD SCREW M4X10
7	3560051	CORD HOLDER
8	9000525	PHILLIPS PAN SCREW M5X25
9	6919437	NAME PLATE 230V
10	3020005	STEEL COVER ASSY
11	6924213	WARNING LABEL
12	3130346	SCREW AND WASHER M6X16
13	9570800	WASHER 8.4X17X1.6
14	3880457	CUTTER SHAFT GUARD
15	9570800	WASHER 8.4X17X1.6
16	9640800	WAVE WASHER
17	3130350	BOLT
18	3130345	WING SCREW M6X10
19	3360356	RUBBER PLUG
20	6924214	BLAND LABEL
21	3130340	HEX HD SCREW AND WASHER
22	3940027	FLANGE
23	9511700	RETAINING RING S-17
24	3900148	COLLAR
25	3940027	FLANGE
26	3900148	COLLAR
27	3180148	SPRING
28	9190612	HEX. HEAD BOLT M6X12
29	3150136	WRENCH SET
30	9190840	HEX. HEAD BOLT M8X40
31	9300800	HEX. NUT M8
32	9220616	HEX. SOCKET HEAD BOLT M6X16
33	9190620	HEX. HEAD BOLT M6X20
34	9300600	HEX. NUT M6
35	9511200	RETAINING RING S-12
36	9300600	HEX. NUT M6
37	9300600	HEX. NUT M6
38	3520048	POWER CORD 1.5X2X2.5 H05VV-F
39	3010001	BASE ASSY
40	3290044	SLIDER
41	9511200	RETAINING RING S-12
42	3100114	CENTER SHAFT PLATE
43	3150139	PLATE
44	9220616	HEX. SOCKET HEAD BOLT M6X16
45	9191025	HEX. HEAD BOLT M10X25
46	9551000	SPRING WASHER M10
47	9571000	WASHER 10.5X22X1.6
48	3150137	FENCE(A)
49	9140630	PHILLIPS FLAT SCREW M6X30
50	3370191	FOOT
51	9511800	RETAINING RING S-18
52	3150138	BLADE HOLDER
53	9510900	RETAINING RING S-9
54	3100119	SUPPORT
55	9511800	RETAINING RING S-18
56	3320062	PLUNGER HOUSING
57	9190825	HEX. HEAD BOLT M8X25
58	9570800	WASHER 8.4X17X1.6

No.	Parts code	Description
59	3290045	CHAIN
60	9190825	HEX. HEAD BOLT M8X25
61	9550800	SPRING WASHER M8
62	3830259	CLUTCH
63	3120103	SPRING PIN 6X30
64	3090093	WISE ASSY
65	3830262	KNOB-HANDLE
66	3100115	SELF-LOCKING RING
67	9000525	PHILLIPS PAN SCREW M5X25
80	9000510	PHILLIPS PAN SCREW M5X10
81	3150140	PLATE COVER
82	3180149	COMPRESSION SPRING
83	3100120	CLEVIS PIN
84	9000510	PHILLIPS PAN SCREW M5X10
85	3820043	BEARING SEAT
86	9846203	BALL BEARING #6203LLB
87	3900153	COLLAR
88	3200041	FINAL GEAR
89	3110002	GEAR SHAFT
90	3100121	PARALLEL KEY
91	9846200	BALL BEARING #6200LLB
92	3800328	ARM
93	3680080	CABLE SHIELD
94	9000410	PHILLIPS PAN SCREW M4X10
95	3290046	HOOK
96	9570600	WASHER 6.4X12.5X1.6
97	3130347	SCREW AND WASHER M5X16
98	9846203	BALL BEARING #6203LLB
99	3900152	BEARING COVER
100	6035917	ARMATURE 220V.230V.240V
101	3900151	BEARING COVER
102	9846200	BALL BEARING #6200LLB
103	3490036	FAN CASING
104	3130349	TAPPING AND WASHER M5X85
105	3500101	FIELD COIL 220V.230V.240V
106	3900150	BEARING BUSHING
107	3800352	MOTOR CASE BL
108	3130348	SCREW AND WASHER M5X45
109	3800316	MOTOR REAR COVER
110	9060516	TAPPING SCREW (B) M5X16
111	9260508	CLAMP SCREW M5X8
112	3570030	BRUSH CAP
113	3540363	CARBON BRUSH CA463S2P
114	3570029	BRUSH HOLDER
115	3560050	SLEEVE
116	3580023	LEAD WIRE ASSY
STANDARD ACCESSORIES		
500	3240130	WRENCH HEX.

CUTTING SAW

C-3561

